

ECOMPOSITE
PRODUCTS

**ULTIMATE RANGE
USER MANUAL**



This Ultimate Range assembly manual will show you how to assemble your own Ultimate Range fencing.

Before beginning the assembly, make sure that there is ample room for installing and assembling your product.

IMPORTANT:

Customers must notify eComposite Products within 5 working days if a delivery has any shortages or damaged items - Notification must be made in writing to sales@ecompositeproducts.co.uk

www.ecompositeproducts.co.uk

sales@ecompositeproducts.co.uk

0800 599 9667

PARTS & TOOLS CHECKLIST

Ensure you have the following parts included as these are crucial components that will be the main frame of your entire assembly.



Rubber Mallet



Tape Measure



Spirit Level



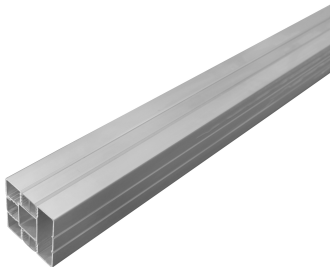
Shovel



Hack Saw



Screw Driver



Aluminium Post
QTY: 1 & 1 End Post



Top & Bottom Rail (Sold as a set)
QTY: 1 per post



Stainless
Steel Guide
QTY: 4



Screws
QTY: 8



Aluminium Cover Strip
QTY: 1 set per post



WPC Panel
QTY: 6 Boards per bay



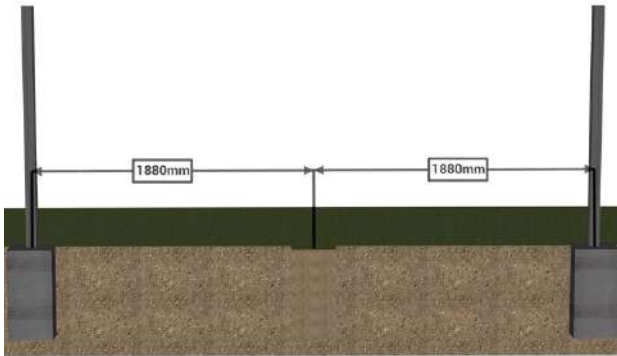
Post Cap
QTY: 1 per post

INSTRUCTIONS

Place two posts into the desired location.

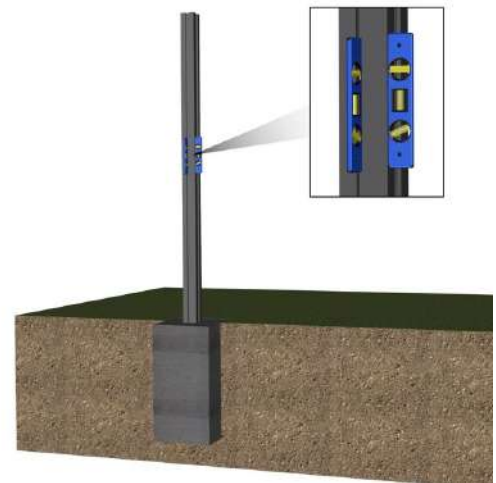
Begin step one by placing two aluminium posts at a distance of 1880mm from the centre of one post to the centre of the next.

Mark the locations and use a shovel to dig two 300mm x 300mm x 500mm deep holes. Insert the post in to the holes, making sure both posts stand 1900mm above ground level.



Fill the locations with concrete.

Once the placement of the posts and the depth of the holes are verified, fill the holes with concrete and use a spirit level to ensure the posts are level, front and side. Make sure both posts remain straight and parallel to one another.



Attach the Stainless Steel Guide with screws to the bottom rail.

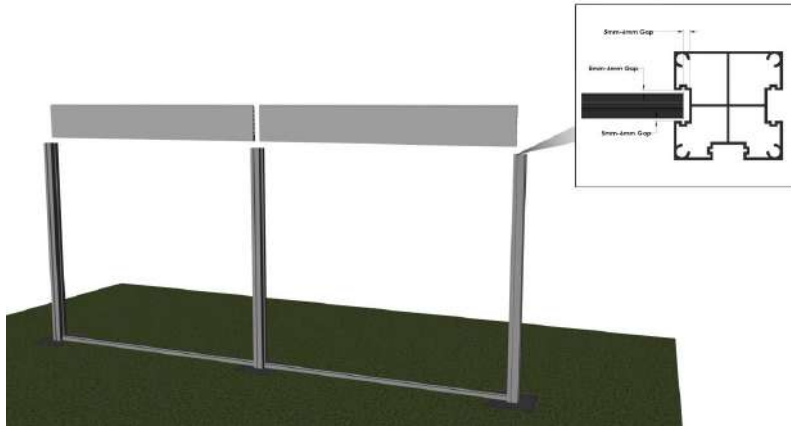
Secure one Stainless Steel Guide and Two Screws on each end of the rails. Tightly secure the hardware to the rails using a Phillips screwdriver. Take care not to over tighten the hardware.



Make sure the rails are secured.

Slide the rails into place, and use the spirit level to ensure the posts are level, front and side. Make sure all posts remain straight and parallel to one another.



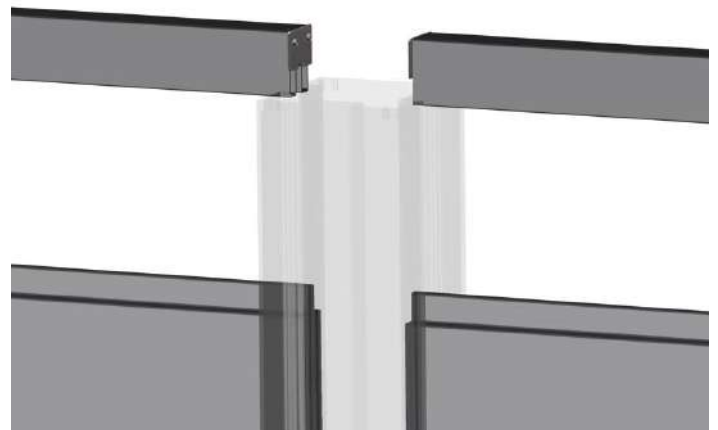


Line up the composite boards.

Remove the top rails and place one composite board between the two aluminium posts. The notched section of the panel goes face down while the extruded side goes face up. Before pushing the panel down, ensure that there is a gap of 5-6mm worth from the sides, as shown. This has been created as a standard so you shouldn't have to worry.

Repeat for the remaining boards.

Repeat these steps for the remaining boards. Once all boards are properly placed into position, re-attach the top rail and secure it above the topmost board.



Installing the cover strips into the unused post grooves.

Slide the remaining cover strips into place into the unused grooves - End posts will have them slotted into the outer grooves and the Fence posts will have exposed front and back grooves to slot the cover strips in to.

Make sure they are pushed all the way to the bottom and secured in place.



Place the caps above the posts.

Place the post caps directly above the posts and push into place, securing the guides, top rail and composite boards.

Secure the caps to the posts using a mallet to tighten the caps into place to prevent unwanted motion and misplacement of the parts attached to the post.





Thank you for choosing eComposite Products!

We hope you love our product as much as we do and love the outcome of your fencing for your project!

We would love to see some final photographs of your projects. If you would like to send us some images, please contact;

sales@ecompositeproducts.co.uk

We would also really appreciate a Google or Facebook review with your thoughts and experiences working with us here at eComposite Products.

Thank you!